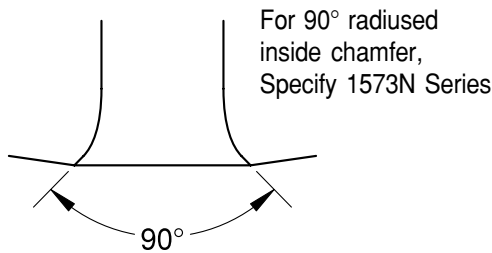
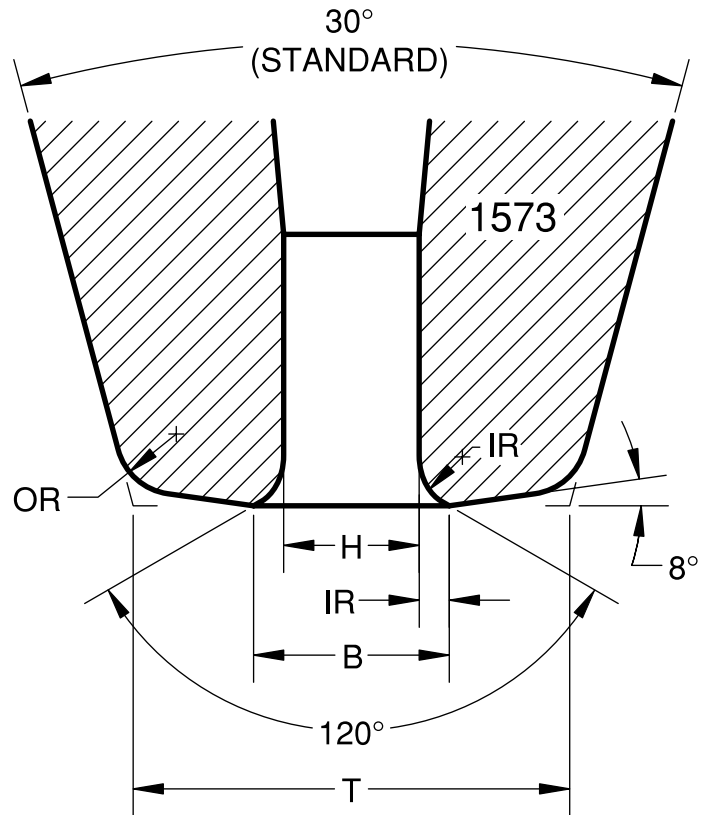


The 1573 series is typically specified for fine pitch bonding applications where an angle bottleneck is not yet required. The small "T" and small "B" design work well with closely spaced, small bond pads, and the 120° radiused inside chamfer (IR) provides excellent looping and wire control for use in high-speed automated bonders. The 1573 series is most commonly specified with the optional 20° cone angle, but is also available in standard 30° and optional 15° angles.

The 1573N may be specified for a 90° radiused inside chamfer for a more compact ball bond on materials with good bondability.



Specify: Series - Dash Number - Length+Finish - Options

Example: 1573-18-437GM-20D

Note: For Tungsten Carbide material, specify 1173 & 1173N series (1/16 in. diameter only).

For 1/8 in. diameter ceramic, specify 1273 & 1273N series.

SERIES & DASH NO.	H* in./μm ±.0001/2.5	IR in./μm (ref)	B** in./μm ±.0002/5	OR*** in./μm ±.0003/8	T (30° CONE) in./μm ±.0003/8	T (20° CONE) in./μm ±.0003/8	SUGGESTED WIRE DIAMETER in./μm
1573-11	.0011/28	.0004/10	.0019/48	.0008/20	.0054/137	.0055/140	.0005/13 to .0008/20
1573-12	.0012/30	.0004/10	.0020/51	.0008/20	.0054/137	.0055/140	.0007/18 to .0009/23
1573-13	.0013/33	.0004/10	.0021/53	.0008/20	.0054/137	.0055/140	.0008/20 to .0010/25
1573-14	.0014/36	.0004/10	.0022/56	.0008/20	.0054/137	.0055/140	
1573-15	.0015/38	.0004/10	.0023/58	.0008/20	.0054/137	.0055/140	.0009/23 to .0011/28
1573-17	.0017/43	.0004/10	.0025/64	.0008/20	.0058/147	.0059/150	.0010/25 to .0013/33
1573-18	.0018/46	.0004/10	.0026/66	.0008/20	.0058/147	.0059/150	
1573-19	.0019/48	.0006/15	.0031/79	.0010/25	.0063/160	.0065/165	.0011/28 to .0013/33
1573-21	.0021/53	.0006/15	.0033/83	.0010/25	.0063/160	.0065/165	.0013/33 to .0015/38
1573-22	.0022/56	.0006/15	.0034/86	.0010/25	.0063/160	.0065/165	

* For hole sizes less than 0.0011 and hole sizes 0.0025 through 0.0049, the tolerance is +.0002/-.0001. For hole sizes greater than 0.0049, the tolerance is +.0003/-.0002.

** For B dimensions greater than 0.0040, the tolerance is +.0003/-.0002.

***OR tolerance ±.0003 for OR less than or equal to .0030; for OR greater than .0030, tolerance is ±10%.

Tighter tolerance available at additional charges. *Dimensions in inches unless otherwise specified*