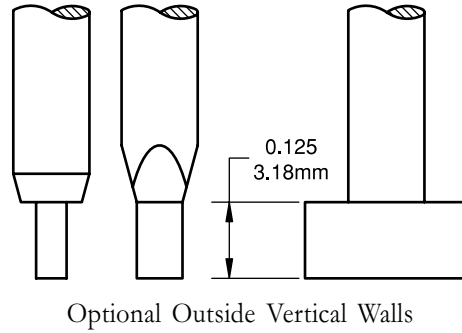
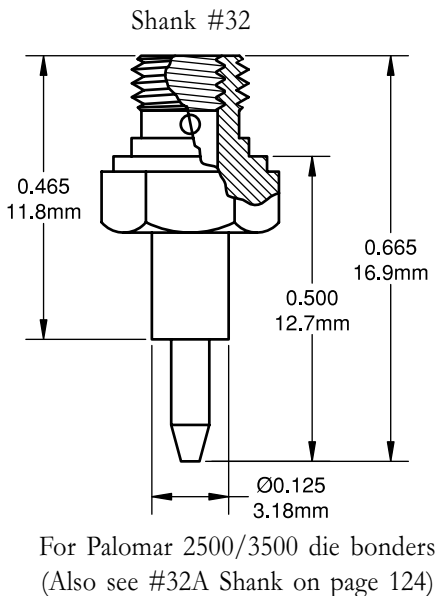
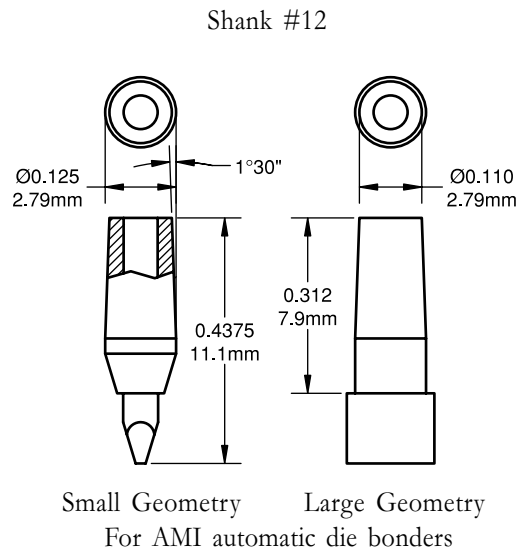
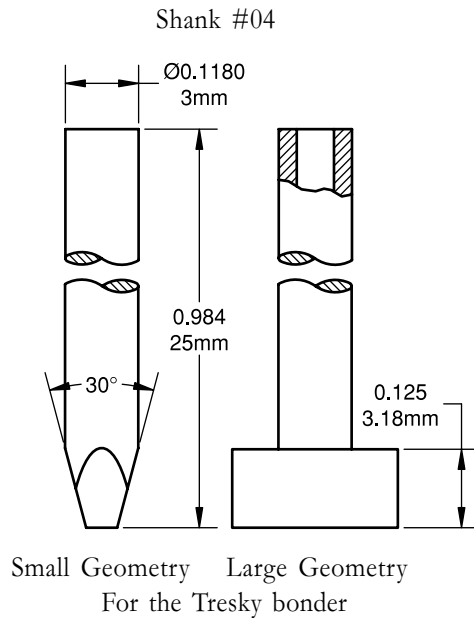
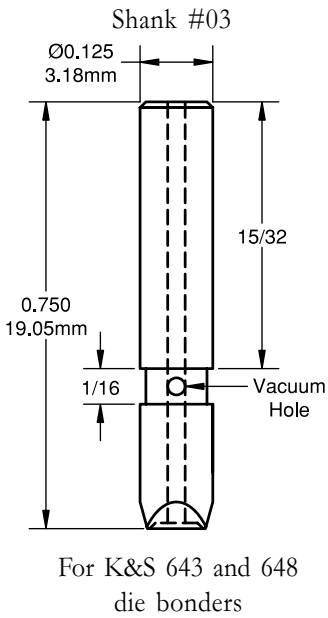


SHANK NUMBER	DIAMETER D in./mm
01	.0625/1.58
02	.125/3.18

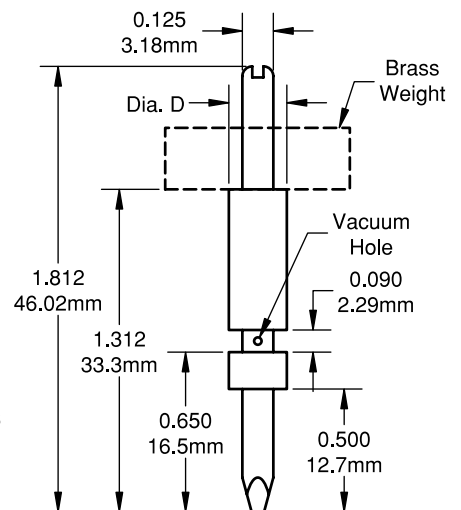


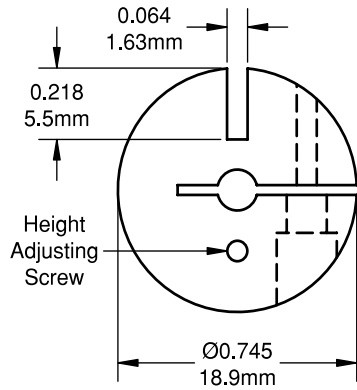
MACHINE	SHANK NUMBER	LENGTH in./mm
Esec	01	.315/8.00
West Bond 7300	01	Specify
K&S 642	02	.750/19.05
Mech El 703	02	.750/19.05
Mullen 8-140	02	.750/19.05
SEC 4000	02	1.00/25.4



SHANK NUMBER	DIAMETER D in./mm
21	.125/3.18
22	.187/4.75
23	.234/5.94
24	.312/7.92

For Mullen/Unitek die bonders  
 Model 8-157 heated

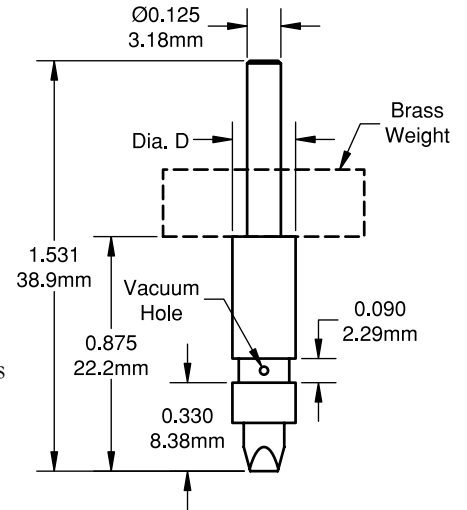




Weights used with collet shanks #21 through #29, #62, and #63 (ordered separate)

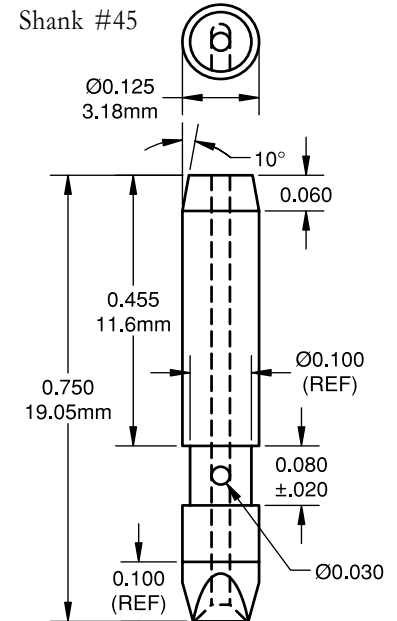
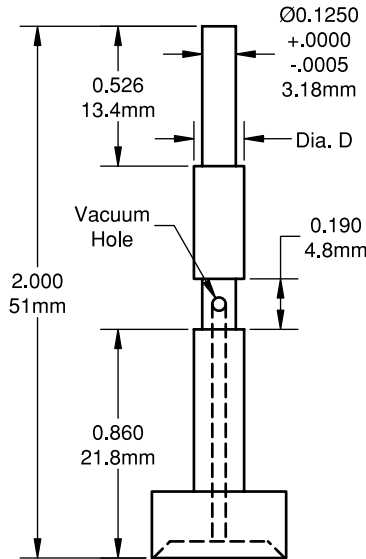
SHANK NUMBER	DIAMETER D in./mm
25	.125/3.18
26	.187/4.75
27	.234/5.94
28	.312/7.92
63	.500/12.7

For Mullen/Unitek die bonders Model 8-140 heated



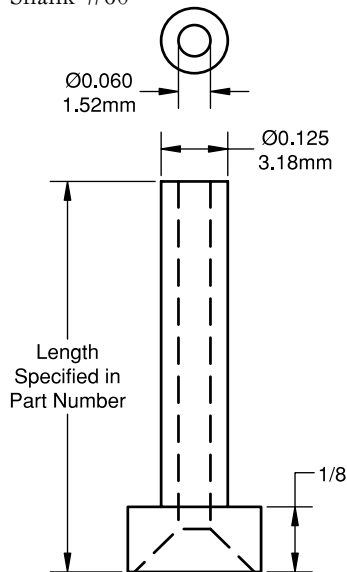
SHANK NUMBER	DIAMETER D in./mm
29	.125/3.18
62	.312/7.92

For Mullen/Unitek die bonders Model 8-140 heated



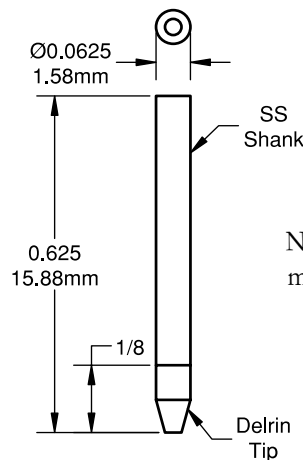
Combination for Mech El 703 and K&S 643 die bonders

Shank #60

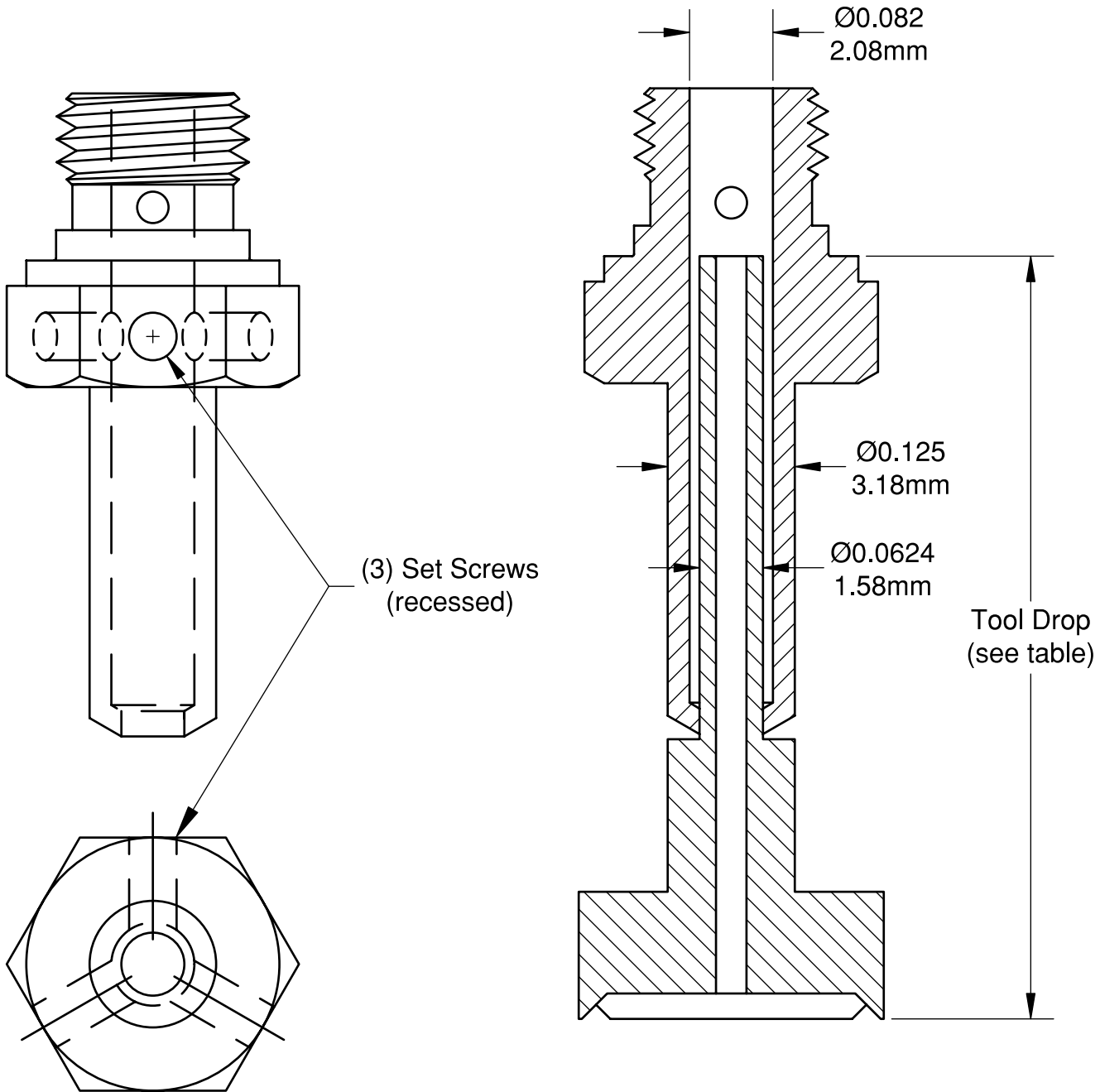


For the K&S 6300 bonder

Shank #61



Note: For other lengths or materials, use 3901C shank



**Specify:** 3632A or 3732A - Tool Drop - Inside Wall Angle - Die Length - Die Width - Die Thickness  
 3832A - Tool Drop - Hole Diameter - Tip Length - Tip Width - Tip Material  
 3932A - Tool Drop - Hole Diameter - Tip Diameter - Tip Material  
 3332A - Tool Drop - Cavity Length - Cavity Width - Wall Thickness - Finish

**Example:**

- 3632A-750TD-90-040-060-005
- 3732A-750TD-90-050-120-004
- 3832A-500TD-010-040-050-VES
- 3932A-600TD-015-030-DEL
- 3332A-700TD-050-040-003-P

TOOL DROP DESIGNATION	TOOL DROP DIMENSION in./mm
-750TD	.750/19.05
-700TD	.700/17.8
-600TD	.600/15.2
-500TD	.500/12.7