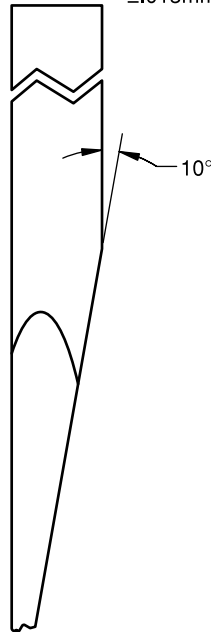
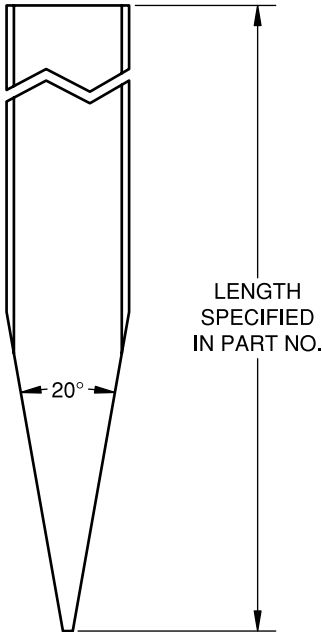
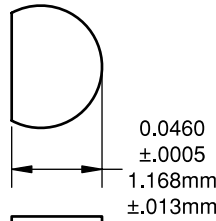
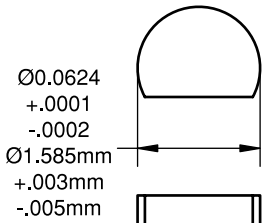
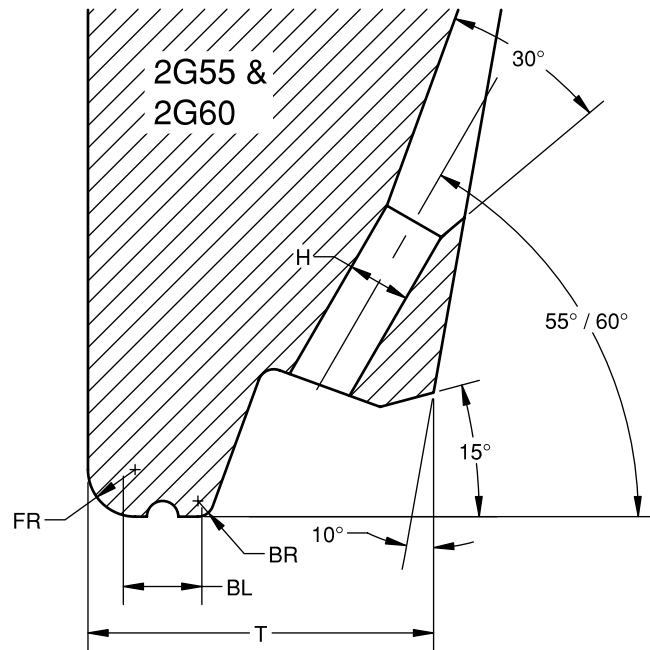
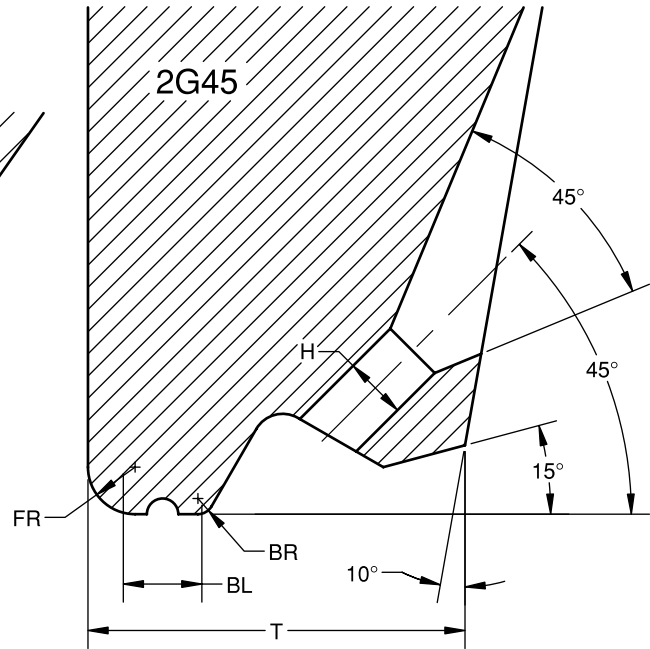
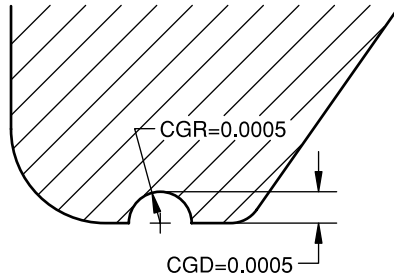


A cross groove is standard on the 2G30, 2G30K, & 2G38 series, centered on the bond length.



**Specify:**

Series/Wire Feed Angle - Hole Size/Bond Length - Length - Options

**Example:**

2G45-2020-S

2G60-1510-3/4-TiC

**Material:**

Tungsten Carbide Standard

Titanium Carbide Optional

(Specify "TiC" in part no.)

Cermet Tip Optional

(Specify "BK CER" in part no.)

<b>SERIES: 2G45</b>							
DASH NUMBER	H in./ $\mu$ m $\pm .0002/5$	BL in./ $\mu$ m $\pm .0002/5$	W in./ $\mu$ m $\pm .0002/5$	FR in./ $\mu$ m $\pm .0002/5$	BR in./ $\mu$ m $\pm .0002/5$	T 45° in./ $\mu$ m $\pm .0005/13$	SUGGESTED WIRE DIAMETER in./ $\mu$ m
1820	.0018/46	.0020/51	.0050/127	.0015/38	.0005/13	.0120/305	.0008/20 to .0010/25
1825	.0018/46	.0025/64	.0050/127	.0015/38	.0005/13	.0120/305	
1830	.0018/46	.0030/76	.0050/127	.0015/38	.0005/13	.0130/330	.0010/25
2020	.0020/51	.0020/51	.0050/127	.0015/38	.0005/13	.0120/305	
2025	.0020/51	.0025/64	.0050/127	.0015/38	.0005/13	.0120/305	.0010/25 to .0013/33
2030	.0020/51	.0030/76	.0050/127	.0015/38	.0005/13	.0130/330	
2520	.0025/64	.0020/51	.0050/127	.0015/38	.0005/13	.0140/356	.0010/25 to .0013/33
2525	.0025/64	.0025/64	.0050/127	.0015/38	.0005/13	.0140/356	
2530	.0025/64	.0030/76	.0050/127	.0015/38	.0005/13	.0150/381	.0015/38 to .0018/46
2535	.0025/64	.0035/89	.0050/127	.0015/38	.0005/13	.0150/381	
2540	.0025/64	.0040/102	.0050/127	.0015/38	.0005/13	.0150/381	.0015/38 to .0018/46
3020	.0030/76	.0020/51	.0050/127	.0015/38	.0005/13	.0150/381	
3025	.0030/76	.0025/64	.0050/127	.0015/38	.0005/13	.0160/406	.0015/38 to .0018/46
3030	.0030/76	.0030/76	.0050/127	.0015/38	.0005/13	.0160/406	
3035	.0030/76	.0035/89	.0050/127	.0015/38	.0005/13	.0170/432	.0020/51
3040	.0030/76	.0040/102	.0050/127	.0015/38	.0005/13	.0170/432	
3525	.0035/89	.0025/64	.0050/127	.0015/38	.0005/13	.0180/457	.0020/51
3530	.0035/89	.0030/76	.0060/152	.0015/38	.0005/13	.0180/457	
3535	.0035/89	.0035/89	.0060/152	.0015/38	.0005/13	.0190/483	.0020/51
3540	.0035/89	.0040/102	.0060/152	.0015/38	.0005/13	.0190/483	
3545	.0035/89	.0045/114	.0060/152	.0015/38	.0005/13	.0200/508	.0020/51
3550	.0035/89	.0050/127	.0060/152	.0015/38	.0005/13	.0210/533	
4530	.0045/114	.0030/76	.0070/178	.0020/51	.0010/25	.0210/533	.0030/76

<b>SERIES: 2G55 &amp; 2G60</b>							
DASH NUMBER	H in./ $\mu$ m $\pm .0002/5$	BL in./ $\mu$ m $\pm .0002/5$	W in./ $\mu$ m $\pm .0002/5$	FR in./ $\mu$ m $\pm .0002/5$	BR in./ $\mu$ m $\pm .0002/5$	T 55° & 60° in./ $\mu$ m $\pm .0005/13$	SUGGESTED WIRE DIAMETER in./ $\mu$ m
1815	.0018/46	.0015/38	.0065/165	.0015/38	.0005/13	.0100/254	.0008/20 to .0010/25
1820	.0018/46	.0020/51	.0065/165	.0015/38	.0005/13	.0100/254	
1825	.0018/46	.0025/64	.0065/165	.0015/38	.0005/13	.0110/279	.0010/25
1830	.0018/46	.0030/76	.0065/165	.0015/38	.0005/13	.0110/279	
1835	.0018/46	.0035/89	.0065/165	.0015/38	.0005/13	.0120/305	.0010/25
2015	.0020/51	.0015/38	.0065/165	.0015/38	.0005/13	.0100/254	
2020	.0020/51	.0020/51	.0065/165	.0015/38	.0005/13	.0100/254	.0010/25
2025	.0020/51	.0025/64	.0065/165	.0015/38	.0005/13	.0110/279	
2030	.0020/51	.0030/76	.0065/165	.0015/38	.0005/13	.0110/279	.0010/25 to .0013/33
2035	.0020/51	.0035/89	.0065/165	.0015/38	.0005/13	.0120/305	
2520	.0025/64	.0020/51	.0065/165	.0015/38	.0005/13	.0110/279	.0010/25 to .0013/33
2525	.0025/64	.0025/64	.0065/165	.0015/38	.0005/13	.0120/305	
2530	.0025/64	.0030/76	.0065/165	.0015/38	.0005/13	.0120/305	.0010/25 to .0013/33
2535	.0025/64	.0035/89	.0065/165	.0015/38	.0005/13	.0130/330	
2540	.0025/64	.0040/102	.0065/165	.0015/38	.0005/13	.0130/330	.0015/38 to .0018/46
3020	.0030/76	.0020/51	.0065/165	.0015/38	.0005/13	.0120/305	
3025	.0030/76	.0025/64	.0065/165	.0015/38	.0005/13	.0130/330	.0015/38 to .0018/46
3030	.0030/76	.0030/76	.0065/165	.0015/38	.0005/13	.0130/330	
3035	.0030/76	.0035/89	.0065/165	.0015/38	.0005/13	.0140/356	.0020/51
3040	.0030/76	.0040/102	.0065/165	.0015/38	.0005/13	.0140/356	
3530	.0035/89	.0030/76	.0065/165	.0015/38	.0005/13	.0150/381	.0020/51
3535	.0035/89	.0035/89	.0065/165	.0015/38	.0005/13	.0160/406	
3540	.0035/89	.0040/102	.0065/165	.0015/38	.0005/13	.0160/406	.0020/51
3545	.0035/89	.0045/114	.0065/165	.0015/38	.0005/13	.0170/432	
3550	.0035/89	.0050/127	.0065/165	.0015/38	.0005/13	.0170/432	.0020/51

Other part numbers are available. *Dimensions in inches unless otherwise specified*